

## Editing graphics between Fireworks and Dreamweaver

© Nigelbuckner 2006

### Editing a graphic in DW

Simple changes can be made to graphics in a web page when using DW. These are: crop, brightness/contrast and sharpen. It is also possible to *resample* an image once it has been resized and to *optimise* an image to reduce file size after insertion into a web page. *The optimise feature uses FW.* The buttons to do this are found in the Properties Inspector.



### FW/DW integration

One advantage of using FW and DW together is that they are integrated for easy editing of graphics. This gives access to more editing features not present in DW.

A graphic that is inserted into a web page in DW can be edited by one click of a button. This opens FW where changes can be made to the graphic. Another click of a button then updates the graphic back in the web page. This can help to save time and effort.

### Editing a graphic between DW and FW

To edit a graphic from DW in FW – highlight the image in DW and click on the Edit in Fireworks button in the Properties Inspector.



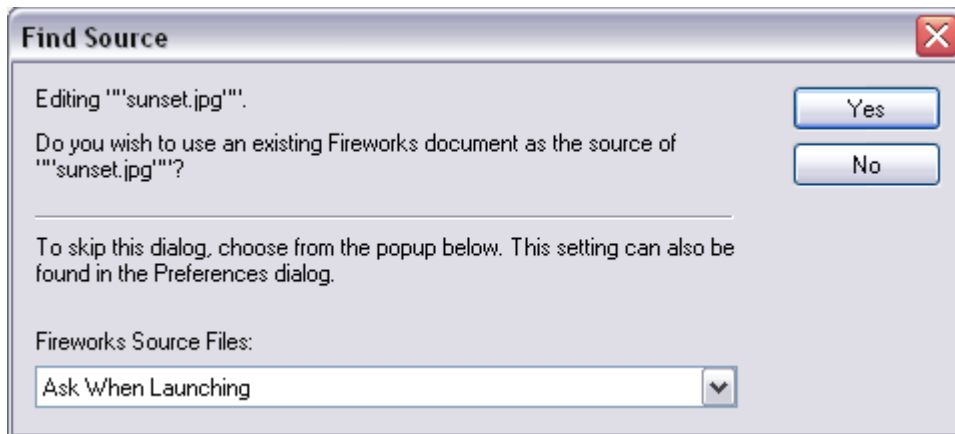
### There are two methods in which graphics are edited in FW.

1. FW can directly edit the graphic file that is placed in the web page.
2. FW can edit the original FW source file from which the graphic in the web page is derived.

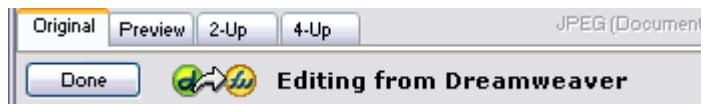
We shall look at both methods in turn.

### Directly editing a graphic file

Highlight the image in DW and click on the Edit in Fireworks button in the Properties Inspector. This opens FW and a Find Source dialogue box will appear:



Choose No. This will open the graphic file that is used in the web page. Make the required changes and click Done. The file will then be saved with the original file name and overwritten. Go back to DW and the image will be instantly updated.



When editing in this manner the file is saved with the selected optimisation settings. *This method optimises an image that is already optimised. This reduces image quality, so keep this method of editing to a minimum.*

### **Editing an original FW source file**

Graphics that are created in FW are saved as png files (portable network graphic). The optimised image for insertion into a web page is then derived from this (*original*) file.

Highlight the image in the web page in DW and click on the Edit in Fireworks button in the Properties Inspector. This opens FW and a Find Source dialogue box will appear. *Choose Yes.*

You will then be prompted to search for the *original* source file. Make the required changes and click Done. The file will be saved with the selected optimisation settings and be instantly updated in the web page.

Editing the original FW source file allows for more comprehensive editing techniques to be used. Also, it does not re-optimize an optimized image. Instead the previous image used in the web page is completely replaced but retains the same file name.