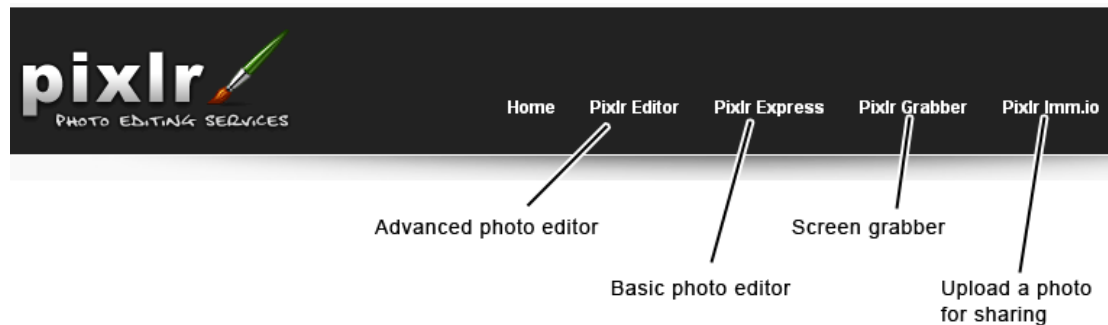


Edit photos with Pixlr Express

© nigelbuckner.com 2010

Pixlr is a free, online photo editor. There is no need to register or download anything to use this service. It means that you can access the service on any computer. The efficiency of this service is dependent upon the speed of your internet connection.

Open a web browser and type in ***pixlr.com*** into the address field.



The photo editor on Pixlr comes in two versions

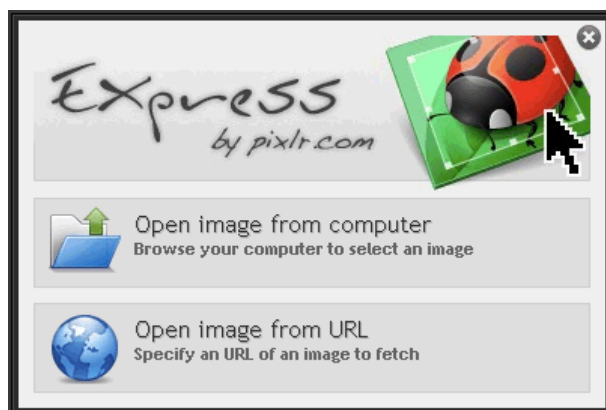
Pixlr Editor is an advanced photo editor, enabling the user to have full control and produce professional looking results. Anyone familiar with Photoshop will be able to understand the interface quite easily. There is a Tools palette, a Navigator, Layers palette (with transparency, blending modes, and layer masks) a selection of filters.

Pixlr Express is a basic photo editor with an intuitive layout and easy to use layout and list of features. This handout describes using this version.

Using Pixlr Express

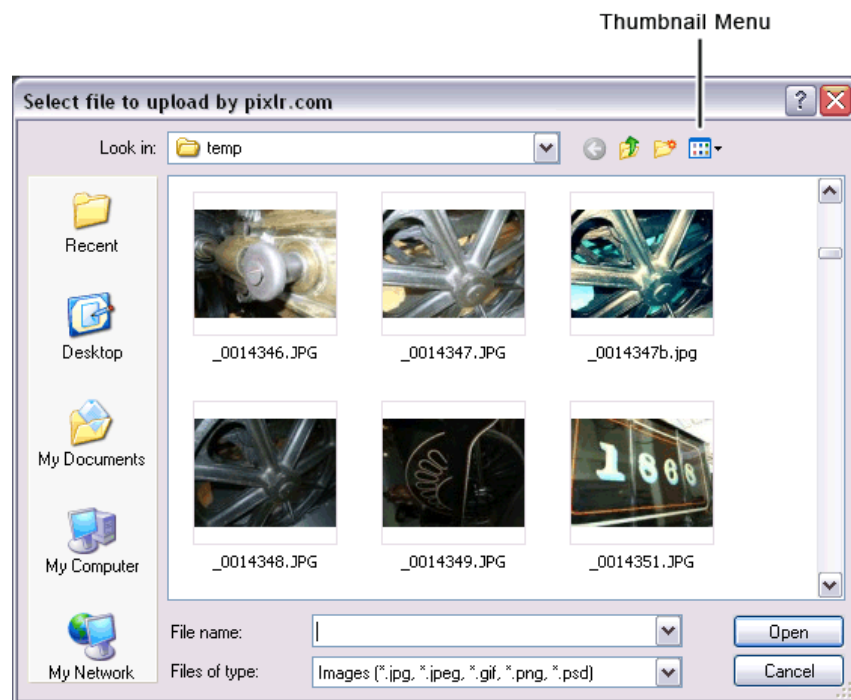
Upload a photo into Pixlr Express (PE), edit the photo (colour, contrast etc) and then save it to your computer. All editing is applied directly to the photo and there are no layers.

Open Pixlr Editor from the web site. You then have the option to open an image from your computer.



Click on *Open image from computer* and browse for a photograph. PE will open these file types: jpeg, gif, png and psd.

When browsing for a photo, click on the *View Menu* and choose *Thumbnails* to see thumbnails of your photos.



To open an image, double click on it or select it and click on *Open*.

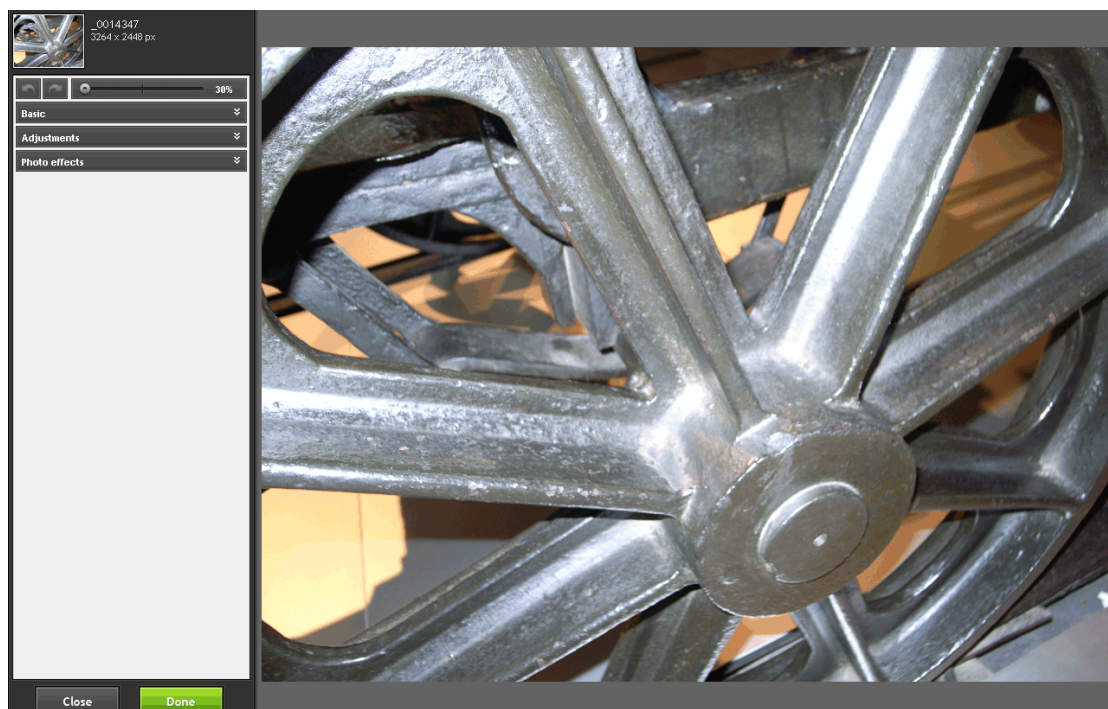
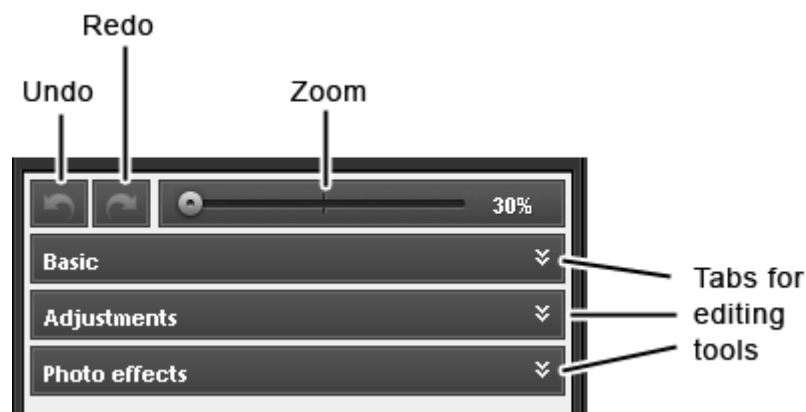


Image opened in PE

On the left is the panel with options for editing a photo. Click on the tabs labelled *Basic*, *Adjustments* and *Photo effects* to reveal the editing tools.



Basic contains options for resizing and cropping.

Adjustments contains commonly used options for editing such as adjustments for contrast and colour.

Photo effects contains special effects filters.

Making an adjustment

In Adjustments, click on Brightness & Contrast. The panel opens to reveal sliders to make changes to the photo. Move the sliders or type in numerical values to make adjustments. Allow time for the effects to apply to the photo.



Either click Cancel or if satisfied with the effect click on Apply and then choose another editing option as required.

Undo and redo

Any number of changes can be made to a photo. If, at any time you wish to go back to a previous or earlier version of the image then click on the **undo** button. Every click on undo will take the image back to the next previous image state. Click on **redo** to reapply changes.

Cropping an image

To cut off edge areas of an image which are not required use the Crop tool under the Basic tab. This puts a crop box over the image with crop handles. Move the crop handles so that the box contains the part of the image you want to preserve and click on Apply.



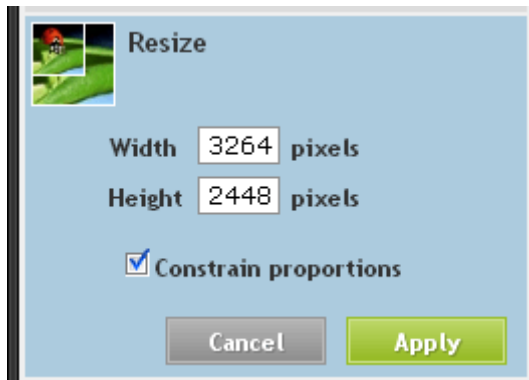
Crop handles



Crop box resized

Resizing an image

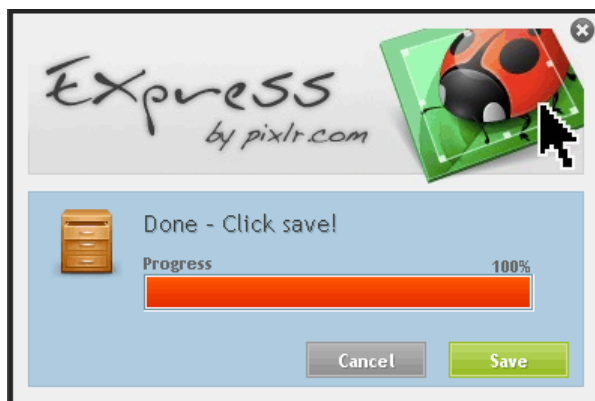
This is useful, for instance when making the image smaller, if the image is intended to be sent as an email attachment or inserted into a web page.



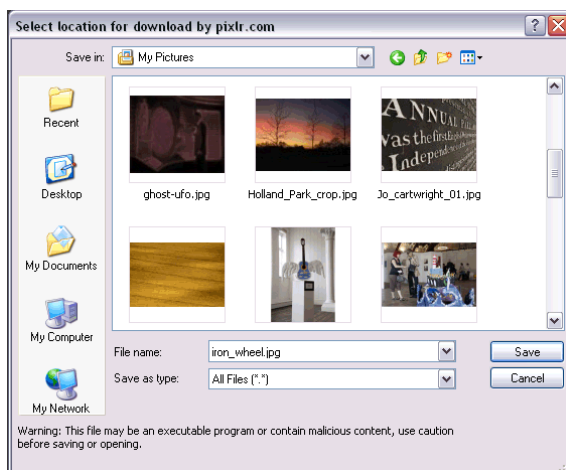
Under the Basic tab, choose Resize and type in numerical values in the Width and Height fields. Keep the *Constrain proportion* checkbox ticked to maintain the proportions of the image. In this case, changing one of either the width or height values will automatically change the other value. Click on Apply.

Saving the photo

To save the changes to the photo, click on the *Done* button at the bottom of the screen. Wait while the image is processed and click on the Save button.



Name the file and choose a location on your computer to save it to.



The image is saved as a JPEG file.