

The Scanner and Camera Wizard is an easy way to download/save your photos from a camera to a computer. It does this by breaking down the process into small steps. The Wizard is a piece of software that is built into Windows.

### Stage 1: Connect the camera to the computer

To use the Wizard, connect the camera to the computer with a USB cable and turn on the camera (some cameras may power up automatically on connection). On connection there should be confirmation on the computer screen that the computer has detected a device or camera.

### Stage 2: Open SCW

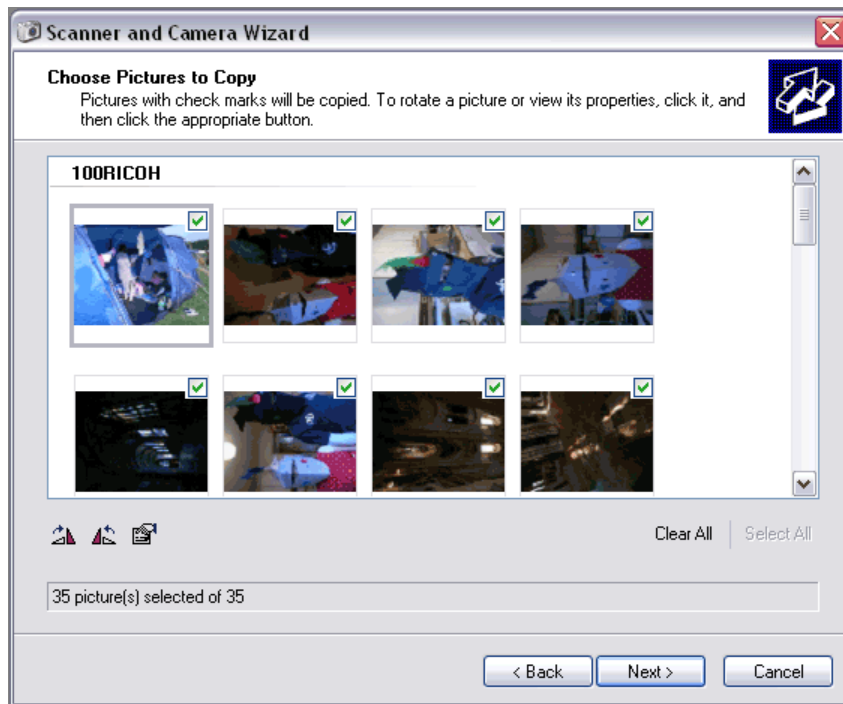
Open the Wizard by clicking on the Start menu, go to All Programs > Accessories > Scanner and Camera Wizard.

The first window looks like this:



### Stage 3: Select the photos to download

Click on the Next button to go to the next stage to see the photos on the camera, like this:



This screen displays *thumbnails* (smaller versions) of the images on the camera. This does not mean that the photos have been downloaded onto the computer.

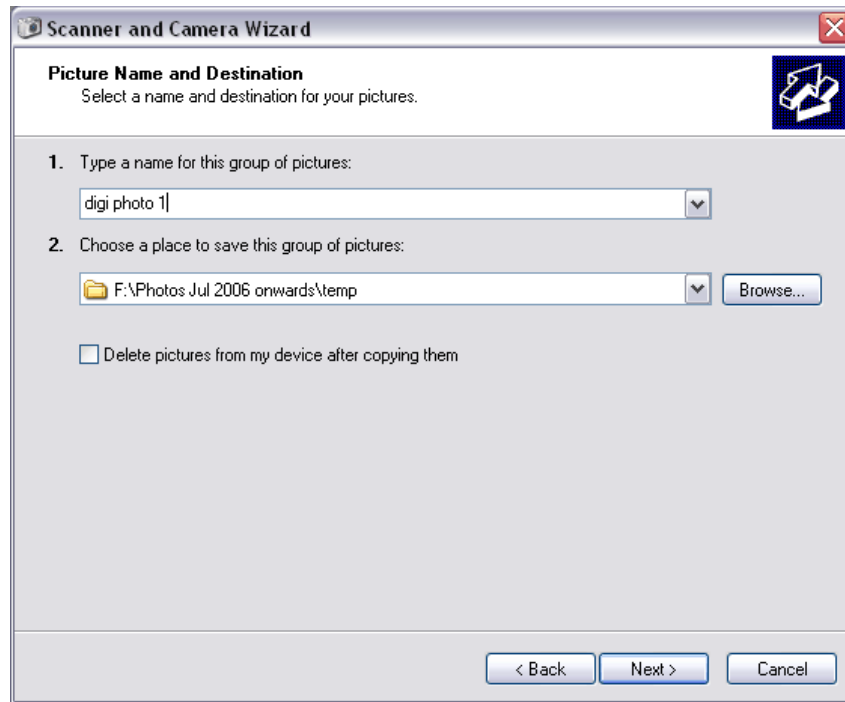
Beside each thumbnail there is a *check box*. When a thumbnail is selected a tick will be present in the check box. Photos with a tick will be downloaded by the Wizard. The Wizard automatically selects all photos but it is possible to choose only the ones you want. If there are just a few photos that you wish to download then click on *Clear All* and click on the check box for those you want.

When you have completed this stage, click on *Next*.

## Stage 4: Download photos

The next window

1. Lets you give a file name for the photos
2. Allows you to say where you want to save them on the computer.



Step 1. Create a name for the photos. Use the name provided at step 1 or create one of your own. When the Wizard downloads the photos it will use this name to label each of the photo files, appending each one with a different number e.g. 001, 002, 003 and so-on.

Step 2. The location where the files are downloaded/saved to on the computer. In many cases this will probably be the My Pictures folder. If the location you require is not displayed at step 2 then click on the Browse button. This will enable you to select a location on the computer.

Do not select the option to 'Delete pictures from my device after copying them' unless you are sure about what you are doing. This will remove the photos from the memory in the camera. You can always delete photos from the camera at a later date.

When ready click on Next. The Wizard will now download the photos from the camera to the computer

**Stage 4: Finish**

The final window informs you that the photos have been downloaded and the location of the files on the computer. Click on Finish and the photo files will open from the location where they were saved.

It is now possible to view the images as thumbnails, filmstrip or slideshow.

*Tip: connecting your camera to the computer takes up a lot of energy from the battery of the camera. Make sure that you turn off or disconnect the camera once the images have been downloaded.*